

# Proposals - Option 1

Option 1 comprises two buildings - a taller block located to the northern end of the site, and the main building arranged in the form of a open courtyard, set deeper within the site.

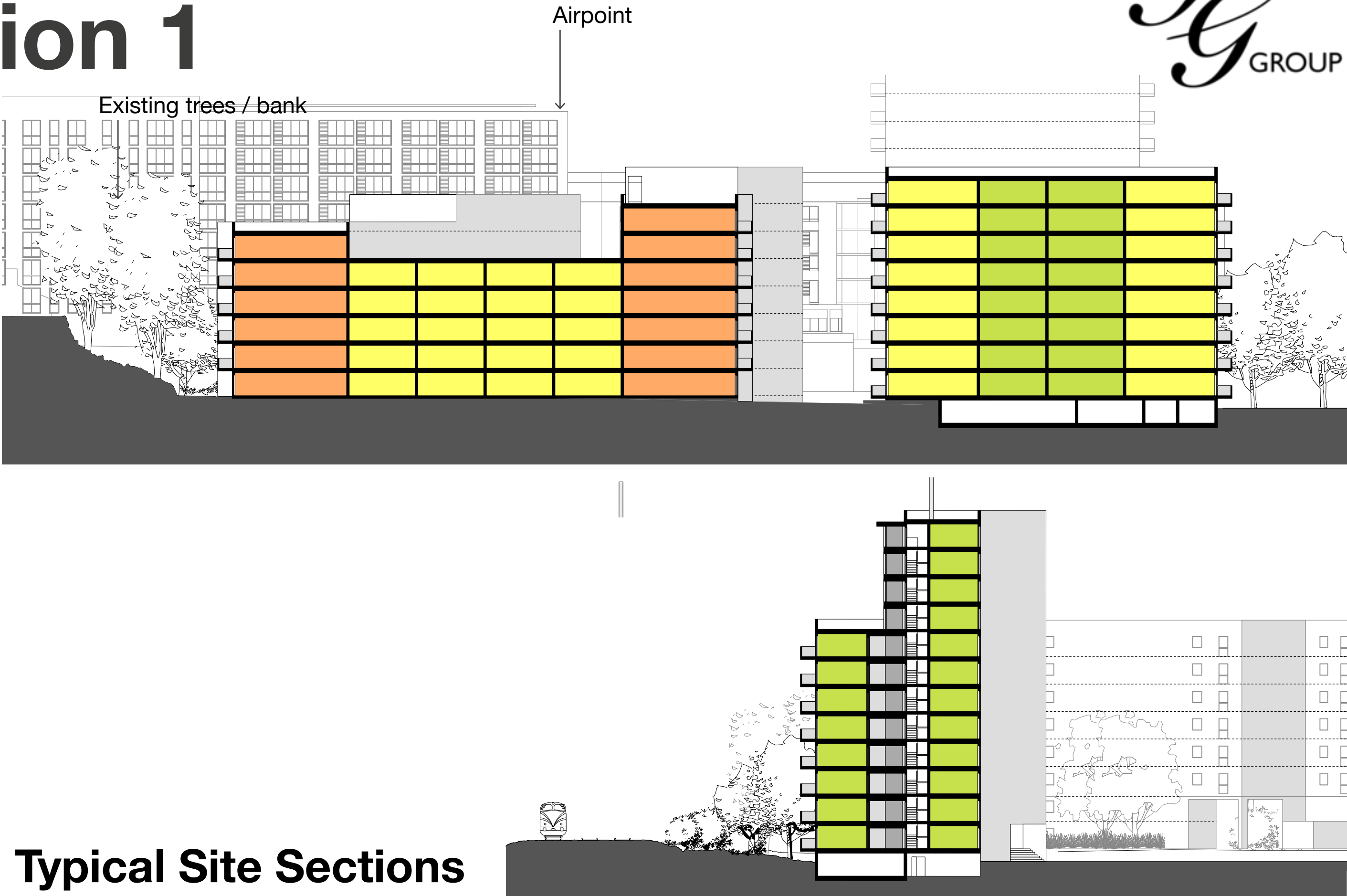
The courtyard building is stepped in height from 5 storeys up to 8 storeys, with the majority being 6 or 7 storeys tall.

The taller point block is also stepped, being 8 storeys above ground near the railway and 12 storeys above ground nearer Sheene Way. Both parts sit on a semi-basement plinth containing ancillary uses (eg plant).

The schematic floor plans below shows the general site layout at typical levels with apartment types rendered in different colours as follows:

- 1 bed apartments (50m2)
- 2 bed apartments (70m2)
- 3 bed apartments (86-95m2)

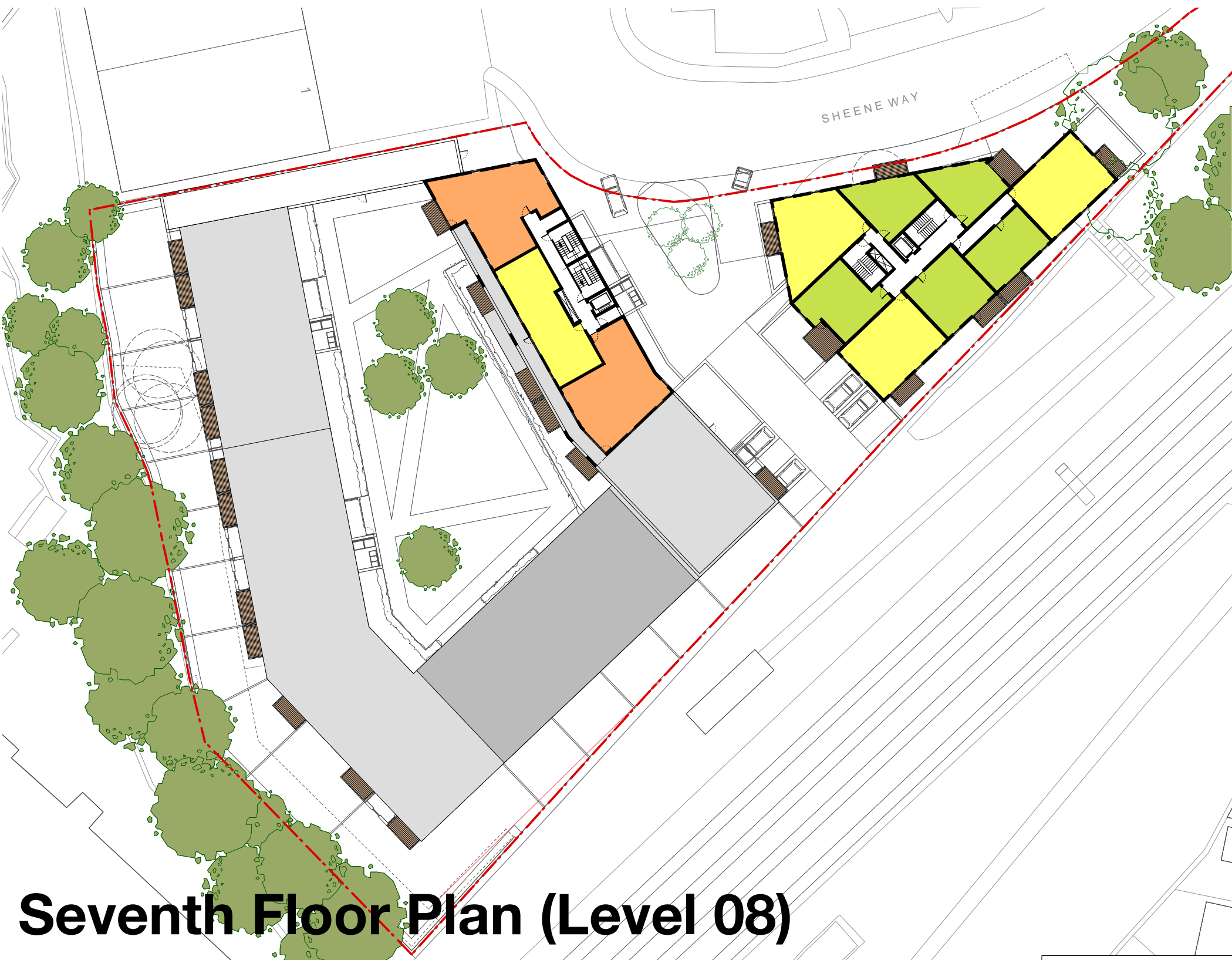
The sections to the right compare the proposals to that of the surrounding buildings, most notably Airpoint and St Monicas located to the north-east.



Typical Site Sections



Sixth Floor Plan (Level 07)



Seventh Floor Plan (Level 08)



Ground Floor Plan (Level 01)



Second Floor Plan (Level 03)